



*This instruction manual contains operating manual and guides of car maintenance.
*Please read carefully before using and operating.

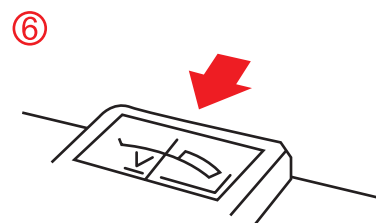
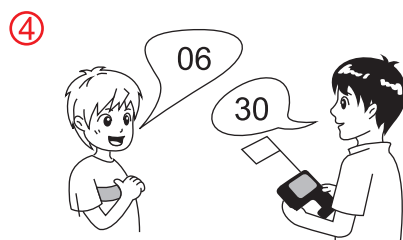
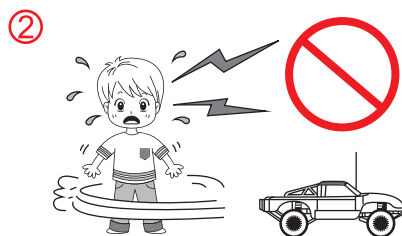
Safety operation guide

- *Thank you for purchasing the product from our company.
- *This is a sophisticated hobby product. It must be operated in a safe and responsible manner. Improper assembly, broken main frame, defective electronic equipment or unskilled operation all may cause unpredictable accidents such as damage or human injury. Please pay special attention to safety operation and have good knowledge of accident responsibility that the user may cause.
- *Users must have relevant experience and obey the operating procedures strictly in a safe venue, otherwise it may lead to personal safety issues.
- *Children have to play the product under adult's supervision.
- *Must use the parts of the original plant (motor, ESC, battery, charger). Do not be arbitrarily modified to use.
- *If the positive and negative are plugged into reverse on the vehicle, it also causes the electronic integration plate and battery damage, combustion, electric shock and explosion.
- *We are not responsible for the misuse, operating that doesn't follow the instruction manual, whether it's direct, indirect, special, secondary or even more serious consequences.

Operating precautions of the model car Safety regulations

1. Don't operate the model car in the public area as it could endanger the traffic (See pic 1).
2. Don't operate the model car in crowded place or in front of people in order to avoid the property damage or personal injury (See pic 2).
3. Don't play near the brook, pond or lake just in case to avoid the car falling into the water (See pic 3).
4. Remote control products have to be far away from strong electromagnetic fields. Make sure there's no one else operating cars with the same frequency at the same time (See pic 4), failure to do so may cause the model car out of control or even serious accidents (See pic 5).
5. Don't operate and play the model car indoors.
6. Please measure the batteries or replace new batteries before each time you drive (See pic 6). Recommend to use same brand batteries or batteries with same voltage to make sure the voltage is stable. Make sure the voltage remains the same if rechargeable batteries are in use and always bear in mind that the batteries need to be fully recharged before in use. Remove all batteries if the model car and controller are not in use.
7. Carefully check whether all screws, nuts or parts are loose before operating the product. Please repair it before in use to make sure the car is in smooth run. Use the neutral cleaner and soft clothes to clean the model surface before storage and don't expose it under high temperature, direct sunlight or in humidity area.
8. In order to avoid the model car is out of control, the following processes should be obeyed step by step: 1. Switch on the controller first followed by turning on the model car. Reverse processes should be obeyed when switch off the model car, Switch off the model car followed by turn off the controller.
9. Don't touch or cumber the rolling parts (such as gears and wheels) after the model has been started as they may cause injury.
10. Don't touch the motor and the Electronic Speed Controller when they are operating as the motor and the Electronic Speed Controller will have high temperature. Pay special attention when hand hold and give it a bit time to cool down.
11. Don't operate the model car in raining day or on water mud as the electrical system is non-waterproof. Short circuit may happen when operating the model car in wicked environments and may cause further damage or accidents. Please purchase or update extra waterproof fittings if required.
12. The product contains small and sharp parts, so please keep it out of children's reach when assembly or storage.
13. Don't aim the antenna towards face and eyes as the very end of it may be dangerous.
14. Please pay attention not allow the motor and the Electronic Speed Controller to overheat if using plenty of batteries or batteries in larger volume to run the model constantly. Stop running for minutes to allow it cool down a little bit; Model car running on steep and uneven ground may reduce the speed and overheat due to the even larger pressure, please take special care when operating in bad environments.

15. Keep away from humid environment. This product is composed of many precision electronic components. it is critical to keep it and associated equipment away from moisture and other contaminants. the operation or exposure to rain or water or moisture in any form can result in malfunction, or a crash or fire hazards.
16. Keep away from rotating parts. Rotating parts can cause serious injury and damage. keep face and body away from rotating motors.
17. Keep away from heat. This product is made of metal fiber, plastic , electronic components etc. keep away from heat and sunshine to avoid distortion and damage.
18. Always keep the motor clean. Once the motor get stuck by foreign material (hair , dirt or fur) , please stop operating immediately and clean the motor and other electronic components. Never try to operate it when it get dirty or wet, or it may result in fire hazards.
19. Adults guided and accompanied are recommended for kids under 15 yrs old.
20. Don't install optional parts which not produced by REMO HOBBY and don't attempt any modifications to avoid causing irreparable damage or accidents.
21. Prohibit to integrate the electronic board (ESC) and battery positive and negative reversed, if error will cause harm, burning, electric shocks and explosive.



Safety Notes on Li-polymer Batteries Storage & Usage

- (1) If a battery is pushed beyond 60 °C during discharging or charging, problems could occur due to metallic lithium generation, which damages cell. Please store batteries at normal room temperature and avoid direct exposure to sunlight or heat. When storing Li-po Li-ion batteries for any length of time, they should ideally be stored at a temperature of between 5 °C & 27 °C .
- (2) After a drive, you may find the battery is warm to touch. it may be a good idea to give the battery a chance to cool down a litter before recharging.
- (3) If you have a battery pack sitting on the shelf, fully charged, please never try topping it up till it has been partially or fully discharged!
- (4) Please make sure you time your drive to leave about 20% power remaining in the battery (instead of completely draining them down) as that would prolong battery life and you can enjoy more cycles if the battery is pushed be ond its limits, it could get hot and the performance will drop.
- (5) When using the battery for a long time, the quantity of heat of your battery will increase, if it is sealed, the air inside will inflate rapidly causing heating.

Charging precautions

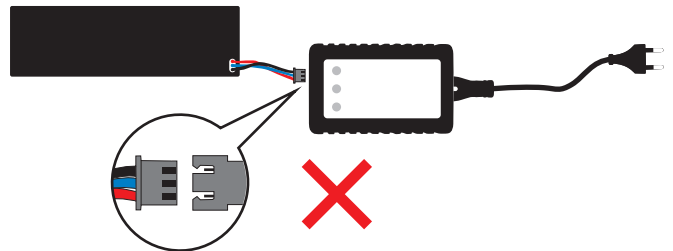
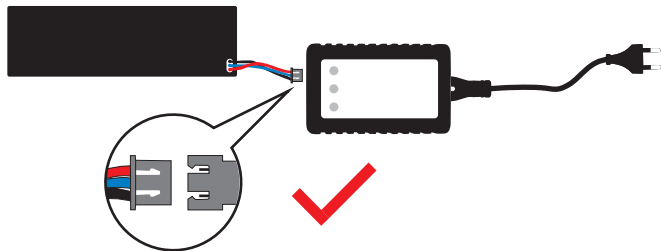
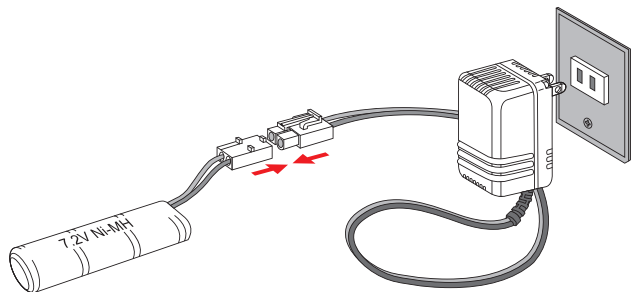
- (1) Must be charged by adults for batteries.
- (2) It's not recommended to put the batteries on the carpet or materials like timber when charging as this may lead to a fire if the battery is overheated.
- (3) Do not overcharge the battery. it may cause overheating and in turn this overheating could damage the battery.
- (4) Never try charging a battery pack that has been crashed or is damaged, you run the risk of fire cells that are obviously swollen or have physical damage should never be used and careful disposal is required, especially if the cells are swollen.

- (5)Please stop using or charging the battery that is warn after use. continue use of this battery may cause it to expand, deform, explode, or even result in fire hazards.
- (6)Do not leave the battery without supervision when charging.
- (7)Make sure that there is no short circuit of the power wire.
- (8)Never attempt to dismantle or alter the charger.
- (9)Please check the charger's wire, plug , surface regularly. Do not use broken charger.
- (10)To charge the battery, you must use only the specified charger or a compatible charger. improper charging may result in a fire. DO NOT use a NiCd or NiMH charger to charge Li-po battery.
- (11)Please do not put chargers and batteries on flammable items such as wood, carpet, sofa, etc., while charging people and animals to stay away from the charger and battery,
- (12)Please insert the charging port of the battery correctly into the corresponding port of the charger.
- (13)Note that the anode and the cathode cannot be plugged into reverse. The positive and negative electrodes if plugged into reverse can cause damage, combustion, electric shock and explosion to the charger and battery.

Battery Charging

- 1.Please check the input voltage of the charger is consistent with local voltage and output charger is consistent with battery voltage. Batteries have to be inserted withthe correct polarity in order to avoid accidents by mistakes.
- 2.Deplete batteries before charging would contribute to better effect for NIMH batteries.
- 3.Reference charging time for NIMH batteries: If charged with 7.2 volt 500 MA charger, the approximately charging time for 1800MAH battery would be 4 hours. For 7.2 volt 2500 MAH battery or either 3600MAH battery, 6 hours & 9 hours charging time required respectively. This is the reference charging time for this type of battery, please bear in mind to avoid overcharge.

NiMH Battery Charging



- 4.Li-polymer battery has to be recharged by the exclusive balance charger, please refer to the relevant user's guide as reference.
- 5.Please correctly connect the pro charger to power and battery pack according to the procedure outline in user manual.
- 6.Please use this charger under supervision.
- 7.Please don't touch the charger and power cord of replace it, or else the fire /electric shock will be caused.
- 8.Please don't touch the charger and power with wet hands or it will bring in electric shock.
- 9.To exted the working life of the charger, please remove it from power once charging is finshed.

Maintenance

- (1) Checking if all screws are loose or not .
- (2) Take out the battery from the controller and the car when you do not use it .
- (3) Apply lubricating oil to all the moving parts.
- (4) Wipe off the dust , oil and other foreign material.
- (5) Dry the car when it get wet.
- (6) Please check all the transmission part is smooth(running).

Practicing & Maintenance

Practicing Part 1

1. Hold the remote controller and check the steering and power functions.
2. Gently pull the throttle trigger to operate the car to go different directions.
3. Gently pull the trigger and release it slowly to make it drive. Repeat the action to attempt different speed. Move the trigger forward to make the brake. Pull the trigger completely to enjoy the highest speed, however, this may require the practitioner owns very good skills with abundant experience. For the beginners should allow the model car to go with low speed at the very beginning for each practice.
4. Please do as much practice as possible to be familiar with the steering system.
5. Please slow down and don't pull the throttle trigger suddenly.
6. After many attempts, you can try to operate the model with fully steering drive in high speed to show your high performance whenever feel confident. The car shell must be installed for each attempt and be aware the steering operation is reverse when the model car drives facing yourself.
7. Try to practice "figure 8".

Practicing Part 2

1. Once you are very well at manipulating the model car, you can set some roadblocks by using empty cans (pylons) on the roomy and safe place, Accelerate on straight road and decelerate the speed on curved road which definitely would be the best way to practice speed control.
2. You may find that it would be much easier if you place your views slightly in front of the model car.
3. If you have already driven freely through all the obstacles and not to hit them, than congratulations, you nearly reached the professional level and be able to drive on the track.
4. You will enjoy your remote control.

Troubleshooting

Problem description	Cause	Solution
The car doesn't move at all.	1. Transmitter or power is off. 2. Batteries are not placed properly. 3. Batteries in the transmitter or the car are in low power.	1. Turn the switch on. 2. Replace batteries again. 3. Replace new batteries.
The car doesn't follow the operation.	1. Someone may use the transmitter in same frequency nearby. 2. Batteries are in low power.	1. Play at different place or wait until the others stop playing. 2. Replace new batteries or recharge the batteries if it's rechargeable batteries.
If the car get stuck in the run.	Please check whether the motor internal is jammed, or please check the gear box inside have sand struck in the gear.	Removing debris or replace new motor.

*Please install and use by reading the instruction manual or packing explanation. Some parts should be installed by adult.

*The product contains small parts which may cause swallow or choke.

*Never play the model car on the road at any time to avoid any danger.

*Please pack up the package in time to avoid choke or any danger.

*Please check the charger, wire, plug, shell and any other parts regularly. In the event of any damage, please do not use it until it has been fixed.

*The charger box has to be inserted into the appointed power source.

*This product must use the charger with original configuration.

*The product contains functional protrusions which likely to cause injury to children.

*Charger is not toy, please apart the charger with the model before cleaning.

*Please don't aim the antenna towards anyone's face or eyes as this is very dangerous.

*Batteries have to be inserted with the correct polarity.

*Use the AA rechargeable batteries or either non rechargeable batteries only.

*Non-rechargeable batteries are not allowed to recharge.

*Adult supervision required when charging the batteries.

*Rechargeable batteries must be removed from the model before charging.

*Don't mix batteries of different types or either in different conditions at the same time.

*Flat batteries should be removed on time.

*Supply terminals should not be short-circuiting.

*Don't short-circuit the batteries, disassemble or put into fire.

*Please remove the batteries when not in use.

*Please keep the instruction manual for future reference.



Li-po Battery Disposal & Recycling
Wasted Lithium-Polymer batteries must not be placed with household trash.
Please contact local environmental or waste agency or the supplier of your model or your nearest LiPo battery recycling center.



Caution: due to technique updates constantly, pictures are for reference only, products are subject to availability.